

# ASSESSOR'S PLAT OF EVERGREEN GLADES SUBDIVISION NO.1

PART OF S1/2 OF SECTION 23, T24N, R5E  
PLAINFIELD TWP, IOSCO CO., MICHIGAN

## SURVEYOR'S CERTIFICATE ON ASSESSOR'S PLAT

I, Glenn F. DeLoater, surveyor, certify:

That I have surveyed, divided and mapped the land shown on this plat, described as follows: ASSESSOR'S PLAT OF EVERGREEN GLADES SUBDIVISION NO.1 Part of S1/2 of Section 23, T24N, R5E Plainfield Twp., Iosco Co., Michigan. Commencing at the Southwest corner of Section 23, Town 24 North, Range 5 East; thence North 89°56' East 632.30 feet along the South section line to the point of beginning; thence North 0°48'30" East 326.27 feet along the South section line; thence North 0°48'30" East 592.10 feet along the East 1/2 line (West line of Plainfield Ridge Subdivision); thence South 87°12' West 210.80 feet along the centerline of Highway M-65 to the point of curve; thence the left having a radius of 1906.82 feet, a delta angle of 39°24'54", a tangent of 623.74 feet, an arc length of 1313.12 feet, a chord bearing and distance of South 87°29'33" West 1287.45 feet; thence Southeasterly 1313.12 feet along the centerline arc of said Highway M-65 to the point of beginning. THIS PLAT CONTAINS 44 LOTS.

That I have made such survey, land division and plat by the direction of Iosco County Board of Supervisors on November 12, 1971.

That such plat is a correct representation of all the exterior boundaries of the land surveyed and the subdivision of it.

That the required monuments and lot markers have been located in the ground.

That the accuracy of survey is within the limits required by Section 126 of the Act.

That the bearings shown on the plat are expressed as required by Section 126 (3) of the Act and as explained in the legend.

March 7 1972



EDMUNDS ENGINEERING, INC.  
1501 WEST THOMAS STREET  
BAY CITY, MICHIGAN 49709  
Glenn F. DeLoater  
Registered Land Surveyor #13030  
VICE-PRESIDENT

CERTIFICATE OF DEPOSIT OF SURVEY MAP, 1972  
Approved by: April 4, 1972  
Notary Public

Notary Public  
Michigan State Bar  
John H. Smith, Clerk

## ASSESSOR'S CERTIFICATE

I, as Supervisor, by virtue of the authority vested in Section 201 (2), Act 288 of P.A. of 1967, having been duly authorized by the Township of Plainfield, Iosco County, State of Michigan, have caused the land described in the annexed plat to be surveyed, laid out and platted and certify that the title to the streets, highways, alleys and other public places shown on the plat has been acquired by reason of purchase, dedication, condemnation or adverse possession for Public use and that the plat conforms to Section 201 through 213 of Act 288 of P.A. of 1967, as amended.

### WITNESSES:

Donna B. Chivria  
Supervisor  
Hale, Michigan

Donna B. Chivria  
Supervisor  
Hale, Michigan

## ACKNOWLEDGMENT FOR ASSESSOR'S PLAT

STATE OF MICHIGAN  
County of Iosco

On this Twelfth day of March, A.D., 1972, before me personally came the above named Dennis B. Chivria, Assessor of Plainfield Township, known to me to be the person who executed the above dedication and acknowledged the same to be his free act and deed as such Assessor.

G. B. B. & C. P. Q. Q.  
Notary Public in and for  
Iosco County, Michigan

My Commission Expires: 2-22-77

## CERTIFICATE OF COUNTY ROAD COMMISSION

The Board of County Road Commissioners of the County of Iosco hereby certifies that the public roads shown on the plat were in existence at the time the plat was made. This certification is made this 27th day of March, 1972, in accordance with Section 209 (1) of Act 288 of 1967.

Henry W. Conley, Chairman  
Morton F. Kille, Vice-Chairman  
A. J. DeLoater, Chairman

## CERTIFICATE OF MUNICIPAL APPROVAL OF ASSESSOR'S PLAT

This plat was approved on March 14, 1972, by the Township Board of Plainfield, as having been made and complying with the requirements of Section 201 and 209 (4) of P.A. 288 of 1967.

Frances J. Hansen  
Township Clerk

## RECORDING CERTIFICATE

State of Michigan)  
Iosco County)

This plat was received for record on the 28 day of April, 1972 at 2:45 P.M. and recorded in Liber 14 of plats on pages 12-18

Albert H. Buch  
Register of Deeds  
15/

Certified true copy of recorded plat.

Notary Public  
Michigan State Bar  
John H. Smith, Clerk

# ASSESSOR'S PLAT OF EVERGREEN GLADES SUBDIVISION NO.1

PART OF S1/2 OF SECTION 23, T24N, R5E

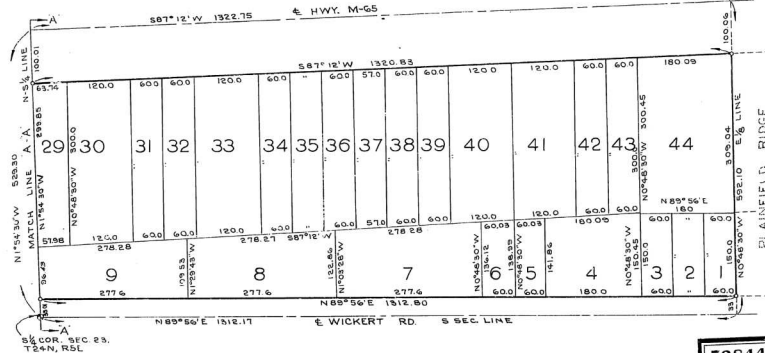
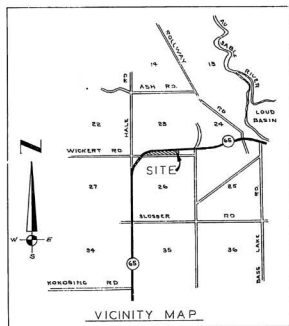
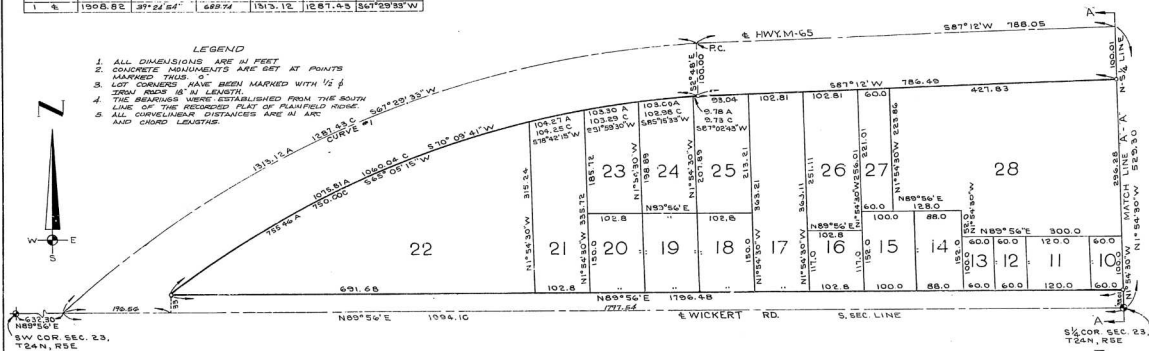
PLAINFIELD TWP, IOSCO CO., MICHIGAN

CURVE DATA						
#	RAD.	Δ	T	A	C	BNG.
1	1808.85	34°04'28"	534.34	1015.81	1065.04	50°09'41"W
2	1908.85	31°24'24"	489.74	1515.13	1587.53	50°09'33"W

SCALE: 1"=40'

## LEGEND

1. ALL DIMENSIONS ARE IN FEET
2. CONCRETE MONUMENTS ARE SET AT POINTS MARKED TRUS.
3. LOT CORNERS HAVE BEEN MARKED WITH 1/2" IRON RODS 18" IN LENGTH.
4. THE BEARINGS WERE ESTABLISHED FROM THE SOUTH LINE OF THE RECORDED PLAN OF PLAINFIELD RIDGE.
5. ALL CURVELENGTHS ARE IN ARC AND CHORD LENGTHS.



52844

EDMANS ENGINEERING INC. BAY CITY, MICH.

SHEET 1 OF 2

# ASSESSOR'S PLAT OF EVERGREEN GLADES SUBDIVISION NO.2

## PART OF SE1/4 OF SECTION 23, T24N, R5E

### PLAINFIELD TWP, IOSCO CO., MICHIGAN

#### SURVEYOR'S CERTIFICATE ON ASSESSOR'S PLAT

I, Glenn F. DeLaMater, surveyor, certify:

That I have surveyed, divided and mapped the land shown on this plat, described as follows: ASSESSOR'S PLAT OF EVERGREEN GLADES SUBDIVISION NO. 2, Part of SE1/4 of Section 23, T24N, R5E, Plainfield Twp., Iosco Co., Michigan. Commencing at the Southeast corner of Section 23, Town 24 North, Range 5 East; thence North 0°21' East 655.50 feet along the East Section line to the centerline of Highway M-65 and the point of beginning; thence North 0°21' East 1951.21 feet along the East Section line to the East 1/8 corner of said Section 23; thence North 89°47' West 1365.85 feet along the East-West 1/8 line to the East 1/8 line; thence South 0°45'45" East 2021.79 feet along the East 1/8 line to the centerline of Highway M-65; thence North 87°12' East 1376.04 feet along the centerline of Highway M-65 to the Point of Beginning. This plat contains 48 lots numbered consecutively 45 thru 92 inclusive.

That I have made such survey, land division and plat by the direction of Iosco County Board of Supervisors on November 12, 1971.

That such plat is a correct representation of all the exterior boundaries of the land surveyed and the subdivision of it.

That the required monuments and lot markers have been located in the ground.

That the accuracy of survey is within the limits required by Section 126 of the Act.

That the bearings shown on the plat are expressed as required by Section 126 (3) of the Act and as explained in the legend.

July 21, 1972  
(Date)



EDMANDS ENGINEERING, INC.  
1501 West Thomas Street  
Bay City, Michigan 48706

Glenn F. DeLaMater, S.V.  
Registered Land Surveyor #13030

#### ASSESSOR'S CERTIFICATE

I, as Supervisor, by virtue of the authority vested in Section 201 (2), Act 288 of P.A. of 1967, having been duly authorized by the Township of Plainfield, Iosco County, State of Michigan, have caused the land described in the annexed plat to be surveyed, laid out and platted in the annexed plat to the streets, highways, alleys and other public places shown on the plat has been acquired by reason of purchase, dedication, condemnation or adverse possession, for public use and that the plat conforms to Section 201 through 211 of Act 288 of P.A. of 1967, as amended.

#### VITNESSES:

James A. Mann  
Barbara H. Malcho

Dennis B. Chivis  
Supervisor  
Hale, Michigan

#### ACKNOWLEDGMENT FOR ASSESSOR'S PLAT

STATE OF MICHIGAN  
County of Iosco

On this 25th day of July, A.D., 1972 before me personally came the above named Dennis B. Chivis, Assessor of Plainfield Township, known to me to be the person who executed the above dedication and acknowledged the same to be his free act and deed as such Assessor.

Richard L. Hoffman  
Notary Public in and for  
Iosco County, Michigan

My Commission Expires: 8-18-74

#### CERTIFICATE OF COUNTY ROAD COMMISSION

The Board of County Road Commissioners of the County of Iosco hereby certifies that the public roads shown on the plat were in existence at the time the plat was made. This certification is made this 24th day of July, 1972, in accordance with Section 209 (1) of Act 288 of 1967.

Henry M. Conley, MEMBER  
Morton P. Killy, Vice Chairman  
R. J. Quierich, CHAIRMAN

#### CERTIFICATE OF MUNICIPAL APPROVAL OF ASSESSOR'S PLAT

This plat was approved on July 24, 1972, by the Board of Trustees of Plainfield Township, as having been made and complying with the requirements of Section 201 and 209 (4) of P.A., 288 of 1967.

Frances J. Hansen  
Township Clerk

#### RECORDING CERTIFICATE

State of Michigan)  
Iosco County)

This plat was received for record on the 27th day of September, 1972 at 1:43 PM, and recorded in Liber 14 of plats on Page 34-35.

Albert H. Bush  
Register of Deeds 1/

RECEIVED  
SEPT. 13 1972  
Johanna W. Woodard  
DEPUTY DIRECTOR

Certified true copy of recorded plat  
Allison Green  
STATE TREASURER  
October 5, 1972

# ASSESSOR'S PLAT OF EVERGREEN GLADES SUBDIVISION NO. 2

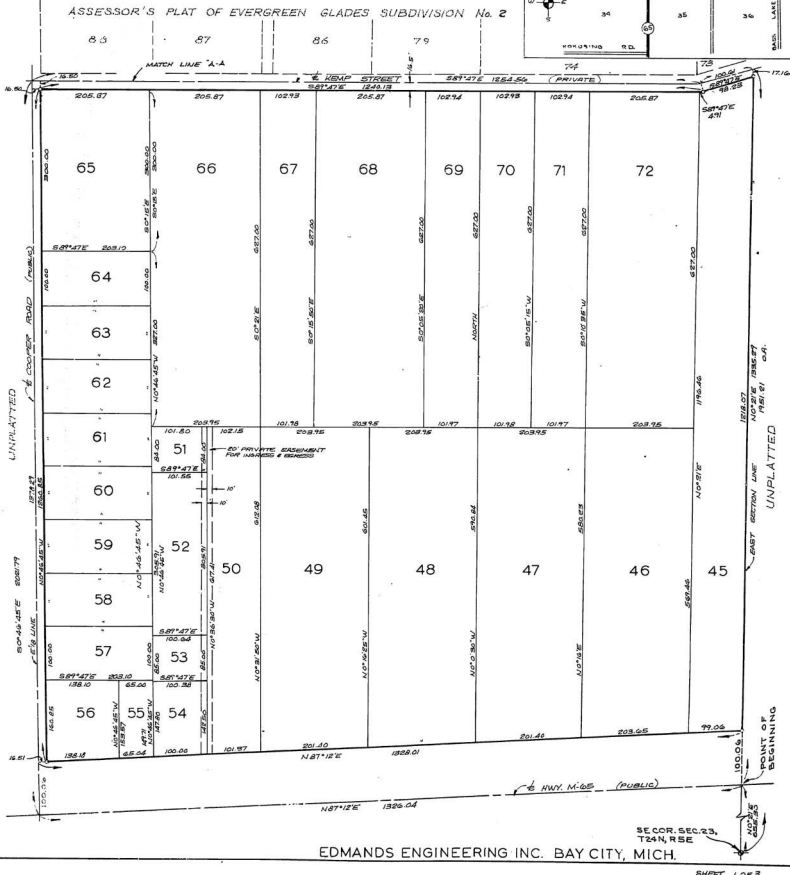
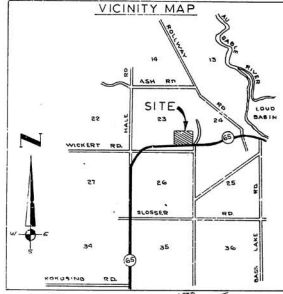
PART OF SE 1/4 OF SECTION 23, T24N, R5E

PLAINFIELD TWP, IOSCO CO., MICHIGAN

SCALE 1"=100'

## LEGEND

1. ALL DIMENSIONS ARE IN FEET
2. CONCRETE MONUMENTS ARE SET AT POINTS MARKED THIS "D"
3. LOT CORNERS HAVE BEEN MARKED WITH 1/2" x 3/4" PINS 18" IN LENGTH
4. THE BOUNDARIES WERE ESTABLISHED FROM THE SOUTH LINE OF THE RECORDED PLAT OF PLAINFIELD RD.



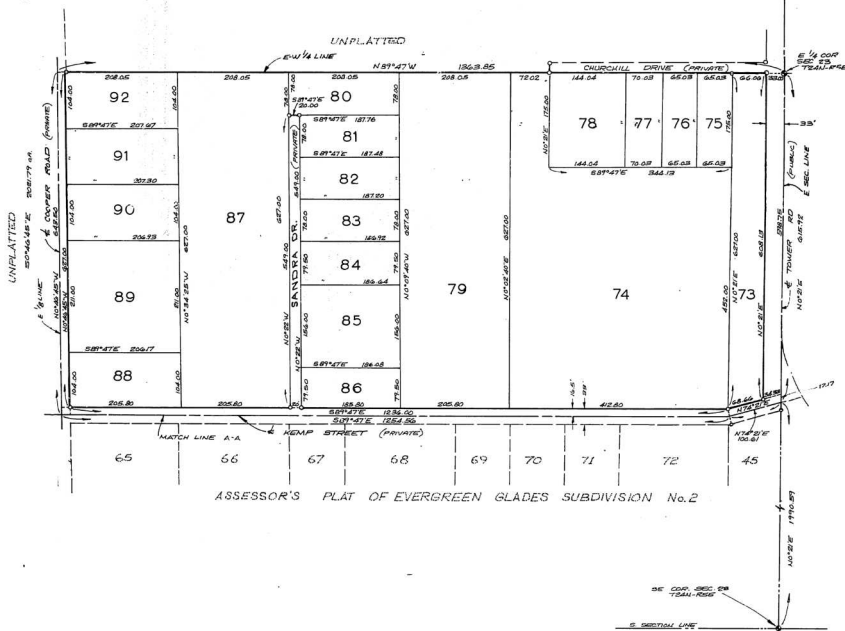
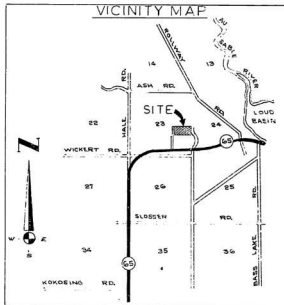
# ASSESSOR'S PLAT OF EVERGREEN GLADES SUBDIVISION NO. 2

PART OF SE 1/4 OF SECTION 23, T24N, R5E

PLAINFIELD TWP., IOSCO CO., MICHIGAN

SCALE 1" = 100'

- LEGEND
1. ALL DIMENSIONS ARE IN FEET
  2. CONCRETE MONUMENTS ARE SET AT POINTS
  3. LIFT CORNERS HAVE BEEN MARKED WITH 1/2" IRON RODS 18 IN. LENGTH
  4. THE BENCHMARKS WERE ESTABLISHED FROM THE SOUTH LINE OF THE RECORDED PLAT OF PLAINFIELD RIDGE



EDMANDS ENGINEERING INC. BAY CITY, MICH.

5-DEPT 2 OF 3

5317

**ASSESSOR'S PLAT OF EVERGREEN GLADES SUBDIVISION NO. 3**  
**PART OF NE1/4 OF SECTION 23, T24N, R5E**  
**PLAINFIELD TWP., IOSCO CO., MICHIGAN**

**SURVEYOR'S CERTIFICATE ON ASSESSOR'S PLAT**

I, Glenn F. DeLaMater, surveyor, certify:

That I have surveyed, divided and mapped the land shown on this plat, described as follows: ASSESSOR'S PLAT OF EVERGREEN GLADES SUBDIVISION NO. 3, Part of Northeast 1/4 of Section 23, Town 24 North, Range 5 East, Plainfield Twp., Iosco Co., Michigan. Beginning at the West 1/2 corner of section 23, Town 24 North, Range 5 East; thence North 89°47' West 2727.70 feet along the East-West 1/2 line to the North-South 1/2 line; thence North 0°35' East 1115.90 feet along the North-South 1/2 line to the North 1/8 line; thence South 89°47'55" East 2723.75 feet along the North 1/8 line to the East Section line; thence South 0°23'40" West 1316.00 feet along the East Section line to the Point of Beginning. This plat contains 33 lots numbered consecutively 93 thru 125 inclusive.

That I have made such survey, land division and plat by the direction of Iosco County Board of Supervisors on November 14, 1971.

That such plat is a correct representation of all the exterior boundaries of the land surveyed and the subdivision of it.

That the required monuments and lot markers have been located in the ground.

That the accuracy of survey is within the limits required by Section 126 of the Act.

That the bearings shown on the plat are expressed as required by Section 126 (5) of the Act and as explained in the legend.

August 10, 1972  
 DATE

Glenn F. DeLaMater  
 Surveyor

Glenn F. DeLaMater, Vice-Pres.  
 R.L.S. #13030

EDMANDS ENGINEERING, INC.  
 1501 West Thomas Street  
 P. O. Box 180  
 Bay City, Michigan 49706



**ASSESSOR'S CERTIFICATE**

I, as Supervisor, by virtue of the authority vested in Section 201 (2), Act 208 of P.A. of 1967, having been duly authorized by the Township of Plainfield, Iosco County, State of Michigan, have caused the land described in the annexed plat to be surveyed, laid out and platted and certify that the title to the streets, highways, alleys, and other public places shown on the plat has been acquired by reason of purchase, dedication, condemnation or adverse possession, for public use and that the plat conforms to Section 203 through 213 of Act 208 of P.A. of 1967, as amended.

**WITNESSES:**

Barbara Malche  
 BARBARA MALCHE  
Harry P. Bacon  
 HARRY P. BACON

Dennis B. Chrivia  
 DENNIS B. CHRIVIA  
 Supervisor  
 Plainfield, Michigan

**ACKNOWLEDGMENT FOR ASSESSOR'S PLAT**

STATE OF MICHIGAN ss.

County of Iosco

On this 28th day of August A.D., 1972 before me personally came the above named Dennis B. Chrivia, Assessor of Plainfield Township, known to me to be the person who executed the above dedication and acknowledged the same to be his free act and deed as such Assessor.

Harry P. Bacon  
 HARRY P. BACON  
 Notary Public in and for  
 Bay County, Michigan

My Commission Expires: March 23, 1975

**CERTIFICATE OF COUNTY ROAD COMMISSION**

The Board of County Road Commissioners of the County of Iosco hereby certifies that the public roads shown on the plat were in existence at the time the plat was made. This certification is made this Sept. 1, 1972 in accordance with Section 209 (1) of Act 208 of 1967.

Henry M. Conley  
 Henry M. Conley, Mayor  
Horton F. Killely  
 Horton F. Killely, Vice Chairman  
R. J. Rulrich  
 R. J. Rulrich, Chairman

**CERTIFICATE OF MUNICIPAL APPROVAL OF ASSESSOR'S PLAT**

This plat was approved on August 28, 1972, by the Township Board of Plainfield as having been made and complying with the requirements of section 201 and 206 (4) of P.A. 208 of 1967.

Frances J. Hansen  
 Frances J. Hansen  
 Township Clerk

**RECORDING CERTIFICATE**

(State of Michigan)

Iosco County)

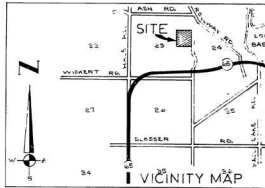
This plat was received for record on the 19th day of Oct 1972 at 1:42 P.M. and recorded in Liber 14 of plats on Pages 28-30.

Robert H. Bush  
 Robert H. Bush  
 Register of Deeds

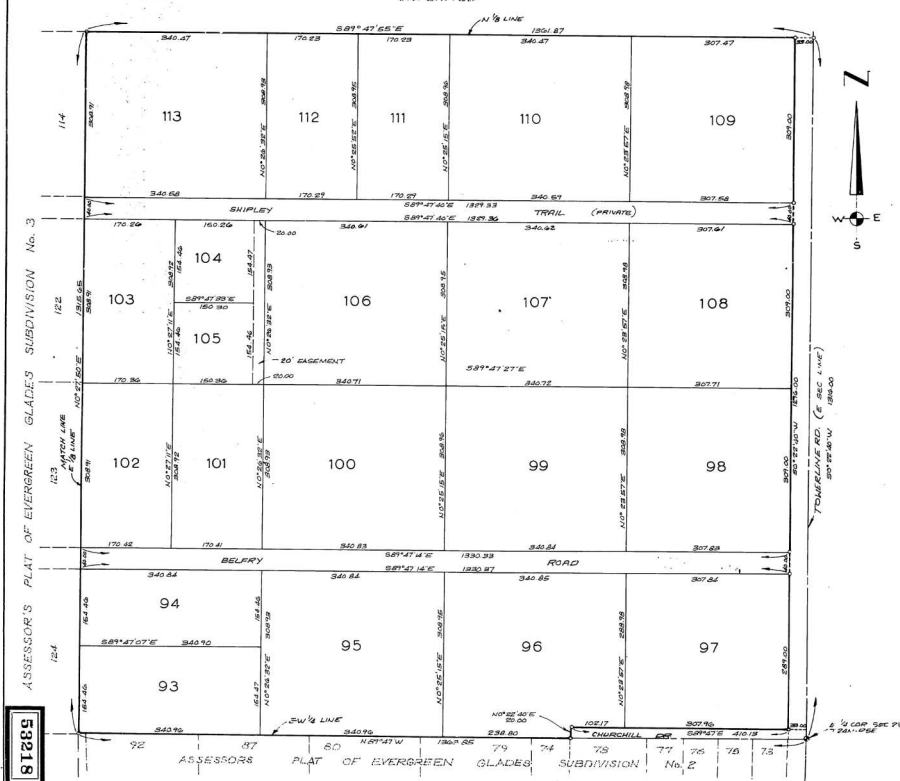
Certified true copy of recorded plat.

William J. Green  
 WILLIAM J. GREEN  
 STATE TREASURER  
 Robert L. Green, Post Treasurer  
 Nov. 7, 1972

LEGEND  
ALL MEASUREMENTS ARE IN FEET  
POINTS ARE SET AT POINTS  
0'  
HAVE BEEN MARKED WITH 1/2"  $\phi$   
IN LENGTH  
WERE ESTABLISHED FROM THE SOUTH  
CORNER OF PLAINFIELD RIDGE.



UNPLATTED



EDMANDS ENGINEERING INC. BAY CITY, MICH.

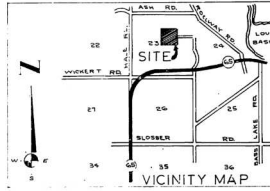
SHEET 1 OF 4

ASSESSOR'S PLAT OF EVERGREEN  
GLADES SUBDIVISION NO 3  
PART OF NE 1/4 OF SECTION 23, T24N, R5E  
PLAINFIELD TWP, IOSCO CO., MICHIGAN

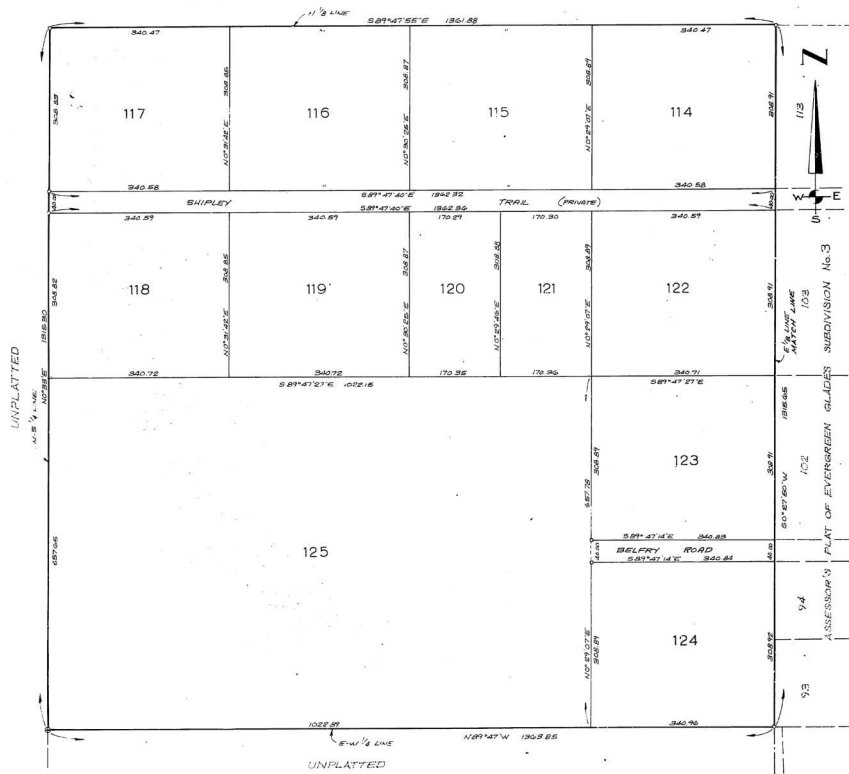
SCALE 1"=100'

LEGEND

- 1 ALL DIMENSIONS ARE IN FEET
- 2 CONCRETE MONUMENTS ARE SET AT POINTS MARKED THIS "C"
- 3 LOT CORNERS HAVE BEEN MARKED WITH "X" & IRON PEGS 6 IN LENGTH
- 4 THE BEARINGS WERE ESTABLISHED FROM THE SOUTH LINE OF THE REDDED PLG OF PLAINFIELD RD.



UNPLATTED



EDMANDS ENGINEERING INC. BAY CITY, MICH.

SHEET 2 OF 3

5318



# ASSESSOR'S PLAT OF EVERGREEN GLADES SUBDIVISION NO.4

## PART OF SE1/4 OF SECTION 23, T24N, R5E

### PLAINFIELD TWP., IOSCO CO., MICHIGAN

#### SURVEYOR'S CERTIFICATE ON ASSESSOR'S PLAT

I, Glenn F. DeLaMater, surveyor, certify:

That I have surveyed, divided and mapped the land shown on this plat, described as follows: ASSESSOR'S PLAT OF EVERGREEN GLADES SUBDIVISION NO. 4, Part of S.E. 1/4 of Section 23, T24N, R5E, Plainfield Twp., Iosco Co., Michigan, Commencing at the South 1/4 corner of Section 23, Town 24 North, Range 5 East; thence North 1°54'30" West 529.30 feet along the North and South 1/4 line to the centerline of Highway M-65 and the point of beginning; thence North 1°54'30" West 2991.98 feet along the North-South 1/4 line; thence South 89°47' East 1,363.05 feet along the East-West 1/4 line; thence South 0°46'45" East 2,001.79 feet along the East 1/8 line to the centerline of Highway M-65; thence South 87°12' West 759.00 feet along the centerline of Highway M-65; thence North 2°04'30" West 759.00 feet along the East line of DODGES FARM SUBDIVISION; thence North 89°55'30" West 262.40 feet along the North Subdivision line; thence South 2°10'30" East 767.24 feet along the West line of said Subdivision; thence South 87°12' West 189.44 feet along the centerline of Highway M-65 to the Point of Beginning. This plat contains 32 lots numbered consecutively 126 through 157 inclusive.

That I have made such survey, land division and plat by the direction of Iosco County Board of Supervisors on November 12, 1971.

That such plat is a correct representation of all the exterior boundaries of the land surveyed and the subdivision of it.

That the required monuments and lot markers have been located in the ground.

That the accuracy of survey is within the limits required by Section 126 of the Act.

That the bearings shown on the plat are expressed as required by Section 126 (3) of the Act and as explained in the legend.

August 10, 1972

Glenn F. DeLaMater, Vice-Pres.  
R.I.S. #13030

EDMANDS ENGINEERING, INC.  
1501 West Thomas Street  
P. O. Box 580  
Bay City, Michigan 48706



#### ASSESSOR'S CERTIFICATE

I, as Supervisor, by virtue of the authority vested in Section 201 (2), Act 288 of P.A. of 1967, having been duly authorized by the Township of Plainfield, Iosco County, State of Michigan, have caused the land described in the annexed plat to be surveyed, laid out and platted and certify that the title to the streets, highways, alleys and other public places shown on the plat has been acquired by reason of purchase, dedication, condemnation or adverse possession, for public use and that the plat conforms to Section 201 through 211 of Act 288 of P.A. of 1967, as amended.

#### WITNESSES:

Daphne M. Malcho  
Daphne M. Malcho  
Notary Public  
Hale, Michigan

Dennis B. Chrivia  
Dennis B. Chrivia  
Supervisor  
Hale, Michigan

#### ACKNOWLEDGMENT FOR ASSESSOR'S PLAT

STATE OF MICHIGAN ss.  
County of Iosco

On this 28<sup>th</sup> day of August A.D., 1972 before me personally came the above named Dennis B. Chrivia, Assessor of Plainfield Township, known to me to be the person who executed the above dedication and acknowledged the same to be his free act and deed as such Assessor.

Harry Z. Bacon  
Harry Z. Bacon  
Notary Public in and for  
Bay County, Michigan

My Commission Expires: March 29, 1975

CERTIFICATE OF DEPARTMENT OF STATE HIGHWAYS  
Approved on Sept. 13, 1972 as complete  
with existing right of way.

MICHIGAN STATE HIGHWAY COMMISSION  
John Woodford  
John Woodford  
DEPUTY DIRECTOR

#### CERTIFICATE OF COUNTY ROAD COMMISSION

The Board of County Road Commissioners of the County of Iosco hereby certifies that the public roads shown on the plat were in existence at the time the plat was in accordance with Section 209 (1) c. Act 288 of 1967.

*This certification is made on Sept. 11, 1972*

Henry M. Conley, Mayor

Walter H. Miller, Vice Chairman

A. J. Aulerick, Chairman

#### CERTIFICATE OF MUNICIPAL APPROVAL OF ASSESSOR'S PLAT

This plat was approved on August 13, 1972 by the Township Board of Plainfield as having been made and complying with the requirements of Section 201 and 209 (4) of P.A. 288 of 1967.

Francis J. Hansen  
Francis J. Hansen  
Township Clerk

#### RECORDING CERTIFICATE

State of Michigan)  
Iosco County)

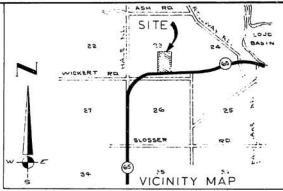
This plat was received for record on the 19<sup>th</sup> day of October, 1972 at 1:43 P.M. and recorded in Liber 16 of plats on Page 22-23.

Robert H. Bush  
Robert H. Bush  
Register of Deeds

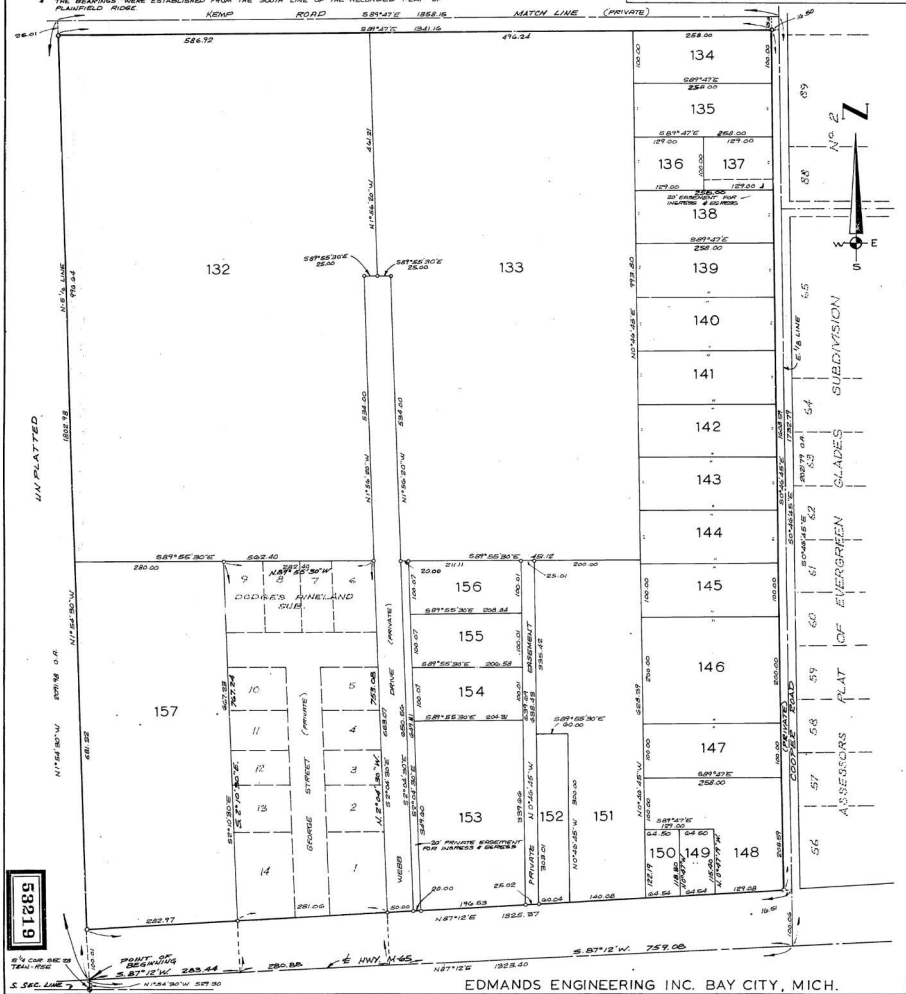
Certified true copy of recorded plat.

William J. Sum  
William J. Sum  
ALLISON GREEN  
JAYE THOMPSON  
W. Nicholas Roman  
Notary Public for Iosco County  
on Jan. 7, 1972

# ASSESSOR'S PLAT OF EVERGREEN GLADES SUBDIVISION NO 4 PART OF SE1/4 OF SECTION 23, T24N, R5E PLAINFIELD TWP, IOSCO CO., MICHIGAN



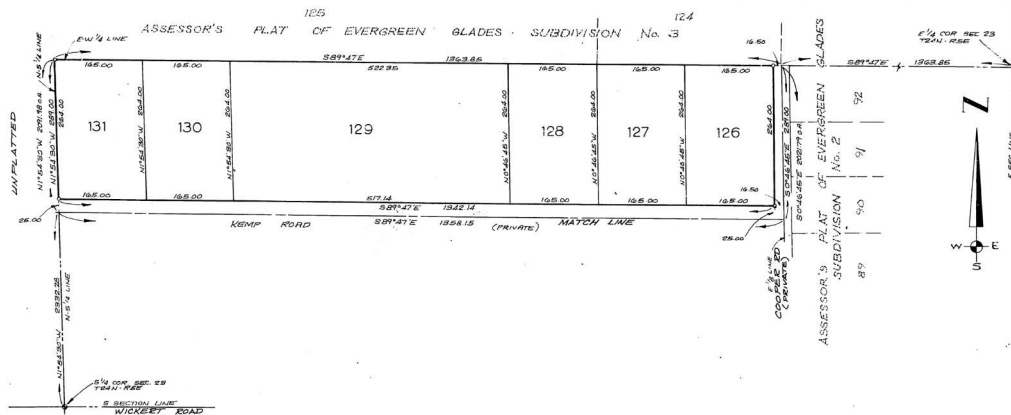
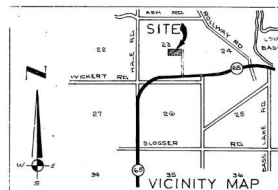
LEGEND  
1. ALL DIMENSIONS ARE IN FEET  
2. CONCRETE MONUMENTS ARE SET AT POINTS MARKED THUS 'O'  
3. LOT CORNERS HAVE BEEN MARKED WITH 1/4" 4" DIRM RODS 18" IN LENGTH  
4. THE BEARINGS WERE ESTABLISHED FROM THE SOUTH LINE OF THE RECORDED PLAT OF PLAINFIELD RIDGE



ASSESSOR'S PLAT OF EVERGREEN GLADES SUBDIVISION NO 4  
 PART OF SE1/4 OF SECTION 23, T24N, R5E  
 PLAINFIELD TWP, IOSCO CO., MICHIGAN

SCALE 1" = 100'

- LEGEND
1. ALL DIMENSIONS ARE IN FEET
  2. CONCRETE MONUMENTS ARE SET AT POINTS MARKED THIS "O"
  3. LOT CORNERS HAVE BEEN MARKED WITH 1/4" # 3 IRON PEGS 8" IN LENGTH
  4. THE BOUNDARY LINES WERE ESTABLISHED FROM THE SOUTH LINE OF THE PREVIOUS PLAT OF PLAINFIELD RIDGE



# ASSESSOR'S PLAT OF EVERGREEN GLADES SUBDIVISION NO. 5

## PART OF SW1/4 OF SECTION 23, T24N, R5E

### PLAINFIELD TWP., IOSCO CO., MICHIGAN

#### SURVEYOR'S CERTIFICATE ON ASSESSOR'S PLAT

I, Glenn F. DeLaMater, surveyor, certify:

That I have surveyed, divided and mapped the land shown on this plat, described as follows: ASSESSOR'S PLAT OF EVERGREEN GLADES SUBDIVISION NO. 5, Part of SW1/4 of Section 23, T24N, R5E, Plainfield Twp., Iosco Co., Michigan. Commencing at the Southwest corner of Section 23, Town 24 North, Range 5 East; thence North 89°16' East 144.00 feet along the South Section line to the Point of Beginning; thence North 09°56' East 288.50 feet along the South Section line to the centerline of Highway M-65; thence North-easterly 1,314.74 feet along the arc of a curve to the right, said curve having a radius of 1,808.02 feet, a tangent of 684.66 feet, a delta angle of 39°27'50", and a chord bearing and distance of North 67°12'00" East 1,288.51 feet; thence North 67°12' East 786.14 feet to the North-South 1/4 line; thence North 1°54'30" West 781.34 feet along the North-South 1/4 line to the South 1/8 line; thence North 89°57'20" West 2,565.87 feet along the South 1/8 line; thence South 2°09'40" West 570.00 feet along the centerline Half Road; thence North 89°56' East 687.00 feet along the North line of Audable River Forest Subdivision; thence South 1°48'35" East 234.84 feet along the East line of said subdivision; thence South 89°56' West 120.00 feet; thence South 1°48'35" East 267.00 feet; thence South 89°56' West 267.00 feet; thence South 1°48'35" East 183.00 feet along the East line of Audable River Forest Subdivision to the Point of Beginning. This plat contains 71 lots numbered consecutively 128 through 228 inclusive.

That I have made such survey, land division and plat by the direction of Plainfield Township Board on November 12, 1971.

That such plat is a correct representation of all the exterior boundaries of the land surveyed and the subdivision of it.

That the required monuments and lot markers have been located in the ground.

That the accuracy of survey is within the limits required by Section 126 of the Act.

That the bearings shown on the plat are expressed as required by Section 126 (3) of the Act and as explained in the legend.

September 25, 1972 EDWARDS ENGINEERING, INC.  
(Date)  
1501 West Thomas Street  
Bay City, Michigan 49706  
Glenn F. DeLaMater, Surveyor  
Registered Land Surveyor #13050



#### ASSESSOR'S CERTIFICATE

I, as Supervisor, by virtue of the authority vested in Section 203 (3), Act 288 of P.A. of 1967, having been duly authorized by the Township of Plainfield, Iosco County, State of Michigan, have caused the land described in the annexed plat to be surveyed, laid out and platted and certify that the title to the streets, highways, alleys and other public places shown on the plat has been acquired by reason of purchase, dedication, condemnation or adverse possession, for public use and that the plat conforms to Section 201 through 213 of Act 288 of P.A. of 1967, as amended.

#### WITNESSES:

*James M. Miller*  
Dennis B. Christ  
Kenneth A. Salisbury  
Kenneth A. Salisbury

*Dennis B. Christ*  
Dennis B. Christ  
Supervisor  
Hale, Michigan

#### ACKNOWLEDGMENT FOR ASSESSOR'S PLAT

STATE OF MICHIGAN ss.

County of Iosco

On this 25th day of Sept. A.D. 1972 before me personally came the above named Dennis B. Christ, Assessor of Plainfield Township, known to me to be the person who executed the above dedication and acknowledged the same to be his free act and deed as such Assessor.

*Thomas A. Christ*  
THOMAS A. CHRIST  
Notary Public in and for  
Iosco County, Michigan

My Commission Expires: 11-12-73

OCTOBER 31, 1972

*Edmunds Engineering, Inc.*  
G.J. MCCARTHY  
ASSISTANT COUNTY CLERK

#### CERTIFICATE OF COUNTY ROAD COMMISSION

The Board of County Road Commissioners of the County of Iosco hereby certify that the public roads shown on the plat were in existence at the time the plat was made. This certification is made this October 11, 1972 in accordance with Section 209 (1) of Act 288 of 1967.

*Henry M. Conley*  
Henry M. Conley, MEMBER  
*Mark J. Kelly*  
Mark J. Kelly, Vice-Chairman  
*R. J. Bielek*  
R. J. Bielek, CHAIRMAN  
A. W. Bielek, CHAIRMAN

#### CERTIFICATE OF MUNICIPAL APPROVAL OF ASSESSOR'S PLAT

This plat was approved on Oct. 11, 1972, by the Board of Plainfield as having been made and complying with the requirements of Section 201 and 209 (4) of P.A. 288 of 1967.

*Frances I. Hansen*  
Frances I. Hansen  
Township Clerk

#### RECORDING CERTIFICATE

State of Michigan)

Iosco County)

This plat was received for record on the 13th day of Nov. 1972 at 3:42 P.M., and recorded in Liber 12 of 34-35 plats on pages 34-35.

*Robert H. Buck*  
Robert H. Buck  
Register of Deeds 1/1

Certified true copy of records

*Edmunds Engineering, Inc.*  
Edmunds Engineering, Inc.

CLYDE GREEN  
TWP. TREASURER

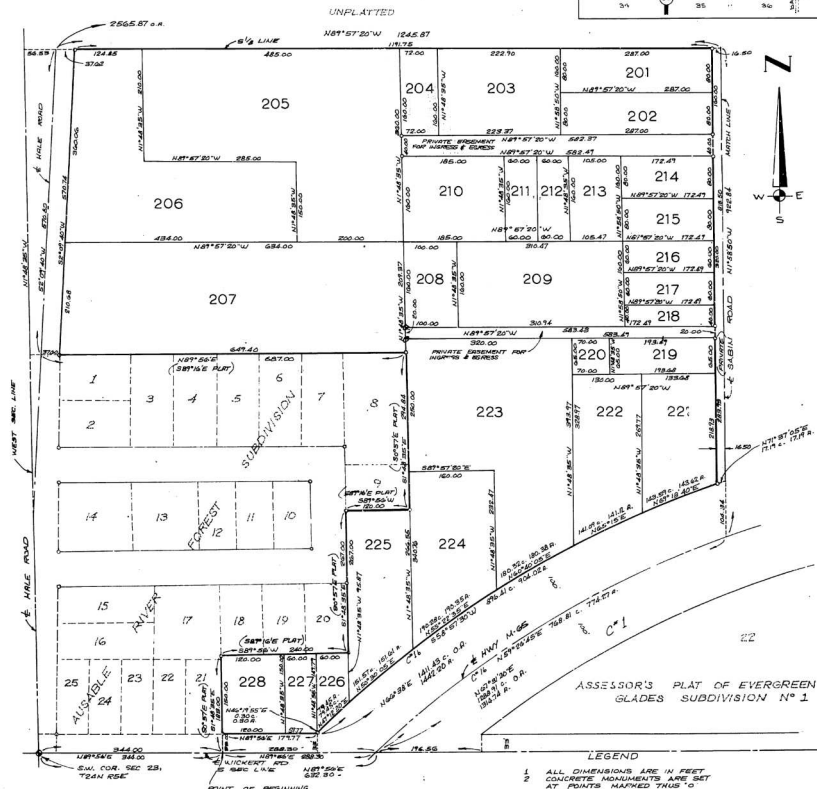
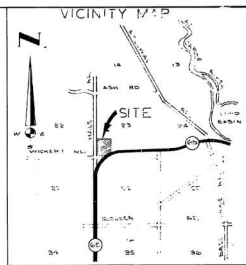
*Richard E. Brown*  
Richard E. Brown, P.M. Clerk

Nov. 30, 1972

# ASSESSOR'S PLAT OF EVERGREEN GLADES SUBDIVISION NO 5

PART OF SW1/4 OF SECTION 23, T24N, R5E  
PLAINFIELD TWP, IOSCO CO., MICHIGAN

SCALE 1"=100'



58220

CURVE DATA					
C*	R	A	T	A	C
1 E	1708.82	31°47'52"	684.54	124.74	1288.71
1 OUT	2008.82	41°08'08"	759.70	144.80	1414.33
1 A	1708.82	23°14'10"	272.54	74.87	708.81
1 A OUT	2008.82	25°47'08"	451.80	94.02	876.41

EDMANDS ENGINEERING INC. BAY CITY, MICH.

SHEET 1 OF 3

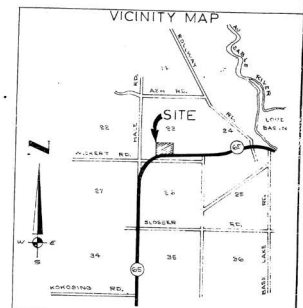
# ASSESSOR'S PLAT OF EVERGREEN GLADES SUBDIVISION NO. 5 PART OF SW1/4 OF SECTION 23, T24N, R5E PLAINFIELD TWP, IOSCO CO., MICHIGAN

SCALE 1"=100'

## LEGEND

1. ALL DIMENSIONS ARE IN FEET
2. CONCRETE ADJUSTMENTS ARE SET AT POINTS MARKED THUS (D)
3. LOT CORNERS HAVE BEEN MARKED WITH 1/4" IRON PINS 18" IN LENGTH
4. THE BEARINGS WERE ESTABLISHED FROM THE SOUTH LINE OF THE RECORDED PLAT OF PLAINFIELD ROSE
5. ALL CURVILINEAR DISTANCES ARE IN ARC AND CHORD LENGTHS

NO.	RAD.	Δ	T	A	C	BEARING
1. IN	1708.82	27°47'30"	586.85	194.76	1548.91	N87°18'20"E
1. OUT	3008.82	41°08'05"	759.76	142.93	161.43	N55°18'12"E
2. IN	1708.82	16°18'40"	272.14	540.47	638.67	N77°08'00"E
2. OUT	3008.82	15°12'00"	270.71	538.48	536.58	N77°18'30"E



UNPLATTED

